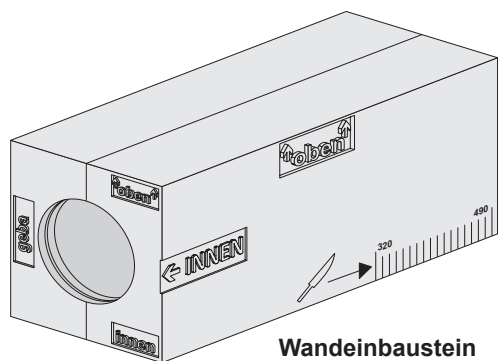
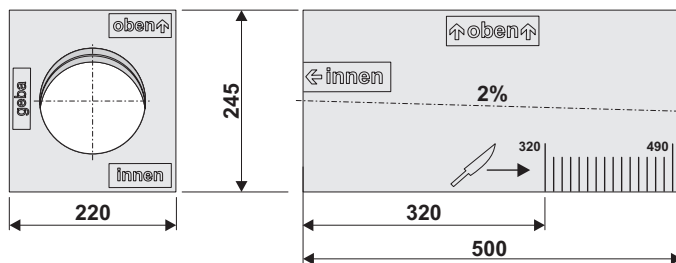


## Lieferumfang

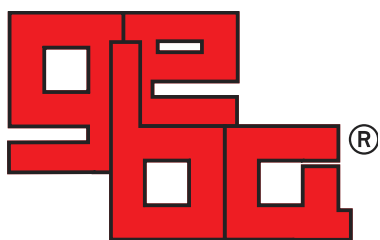
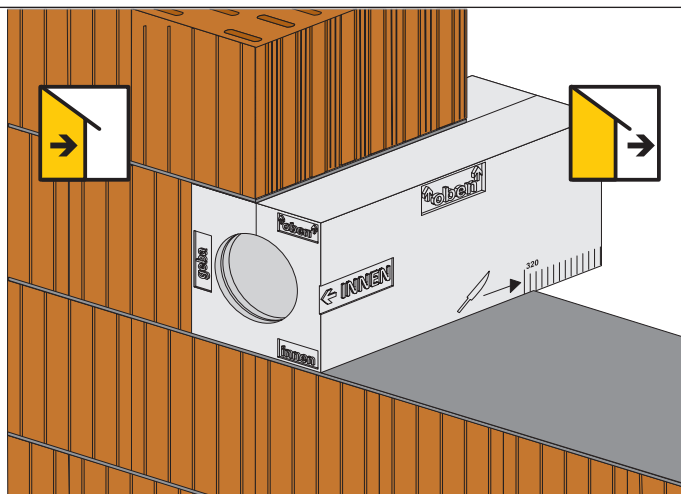
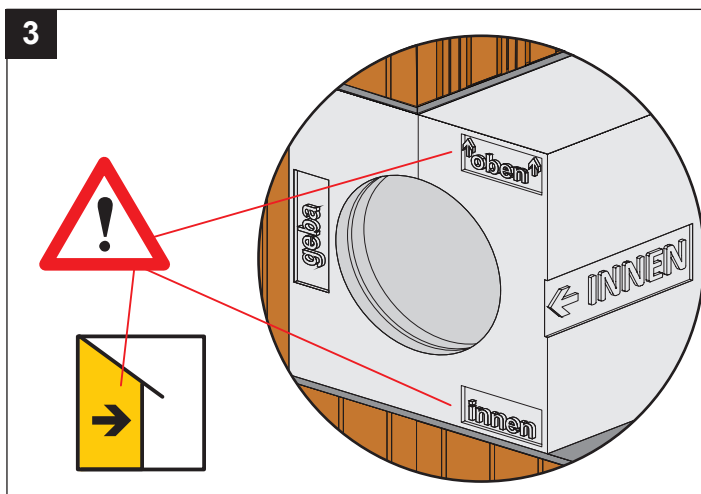
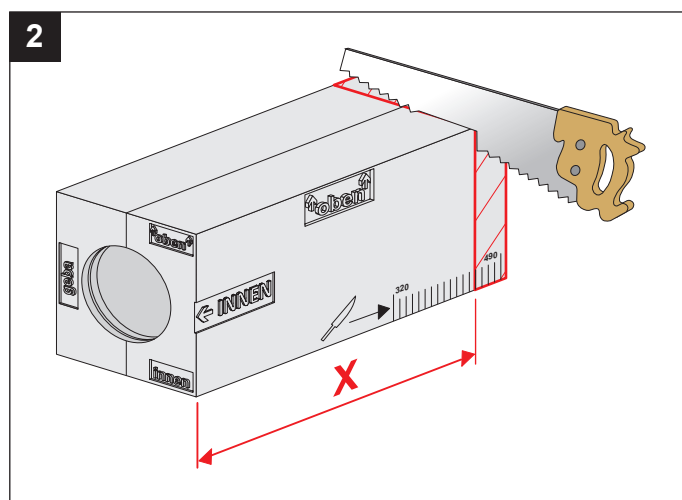
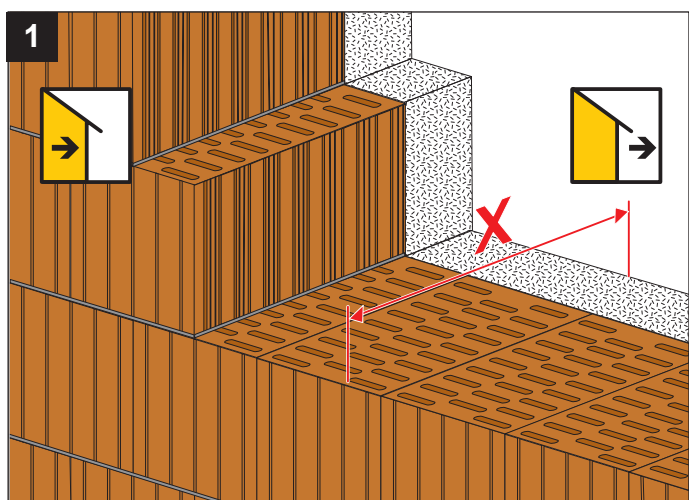
[mm]



Wandeinbaustein



(EPS mit Flammschutz)



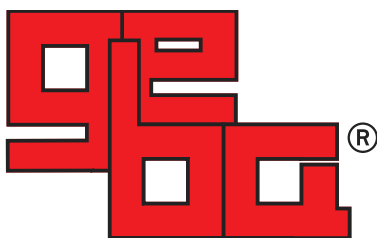
Bartholomäus GmbH

Technische Änderungen vorbehalten

Bartholomäus GmbH  
Bachstraße 10  
D-89607 Emerkingen

Telefon +49 (0)7393 - 95 19 - 0  
Fax +49 (0)7393 - 95 19 - 40  
info@geba-emerkingen.de  
www.geba-emerkingen.de

Stand: 03/2023



---

Bartholomäus GmbH

Bartholomäus GmbH  
Bachstraße 10  
D-89607 Emerkingen

Telefon +49 (0)7393 - 95 19 - 0  
Fax +49 (0)7393 - 95 19 - 40  
[info@geba-emerkingen.de](mailto:info@geba-emerkingen.de)  
[www.geba-emerkingen.de](http://www.geba-emerkingen.de)